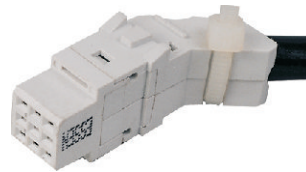
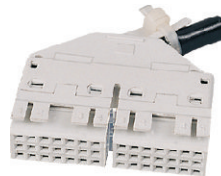
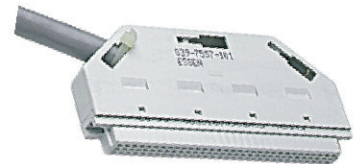


**Characteristics :**

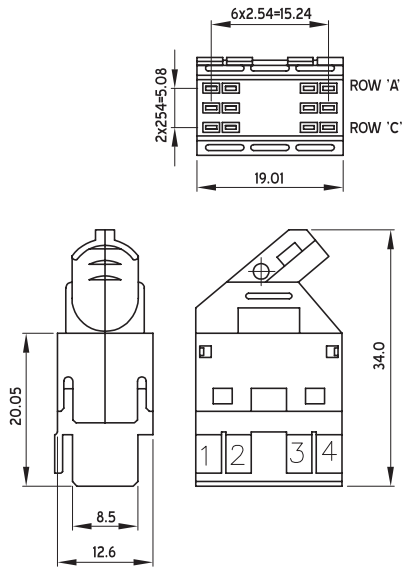
- ◆ Designed for the telecom Industry.
- ◆ Conform to BT D2580D (Type 222) standards.
- ◆ Find many new applications in areas such as computing, datacoms and process control due to its flexibility.
- ◆ Use standard and reverse DIN 41612 PCB connectors in 3 rows with modular 9, 14, 21, 45, 64 and 96 way cable connectors.
- ◆ Cable connectors are terminated by means of the 'IDC' principle and will accept 26 or 30 AWG discrete or ribbon cables.
- ◆ Uninsulated drain wires can also be terminated without the need for additional insulation keys.
- ◆ Latching and polarisation is achieved by means of tabs on the cable connectors and latch frames fitted to the PCB connectors.


**9 WAY**

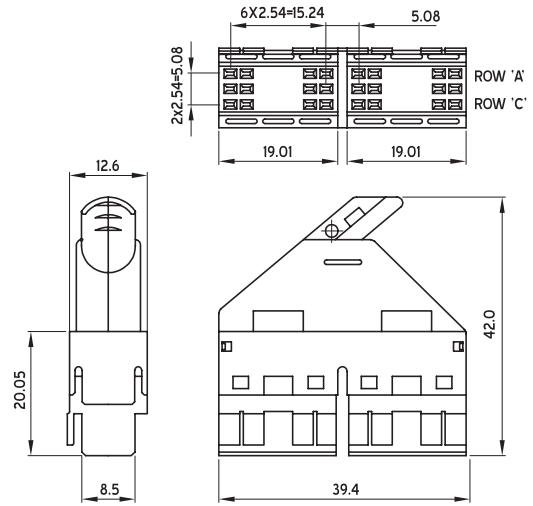
**14 WAY RIBBON**

**42 WAY**

**96 WAY**
**Technical data :**

Current rating	: 1A AC or DC rms. per contact at 70°C ambient 1.5 A AC or DC rms. per contact at 25°C ambient
Voltage	: Continuous working AC or DC peak 350V Proof AC or DC peak 1050V (applied for 60 ± 5 secs.)
Contact resistance	: Maximum 15mohms initial
Climatic category	: -28°C to +85°C / 21 days
Engaging forces	: 1 N per contact max.
Separating forces	: 0.2 N per contact min.
Conductor	: 26 AWG - 0.4 mm. (0.016), 30 AWG - 0.25 mm. (0.01)
Insulation	: 0.85 mm. (0.033), 0.6 mm. (0.024) Approved insulator materials - polyethylene, polypropylene
Material	: Female contacts - copper alloy Insulation materials - flame retardant thermoplastic UL94V-O
Plating	: Contact zone - gold over nickel Termination zone - tin lead

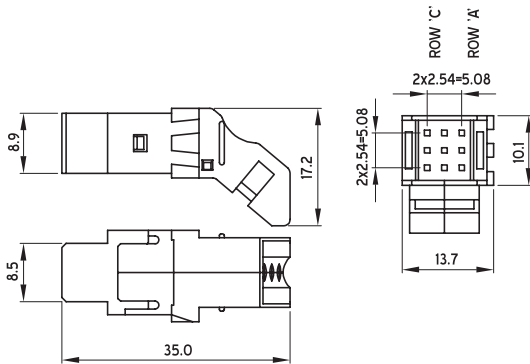
### 21 WAY



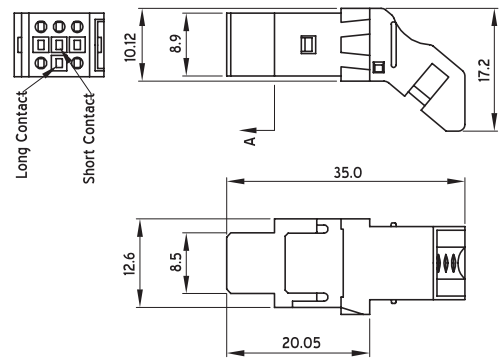
### 45 WAY



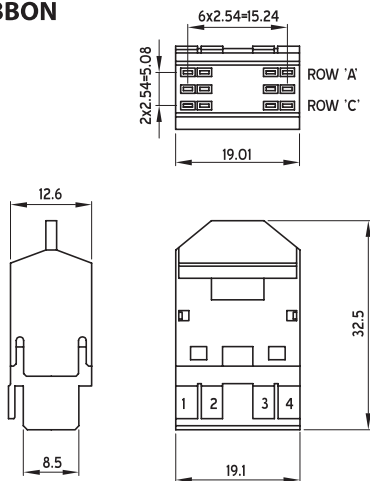
### 9 WAY DISCRETE



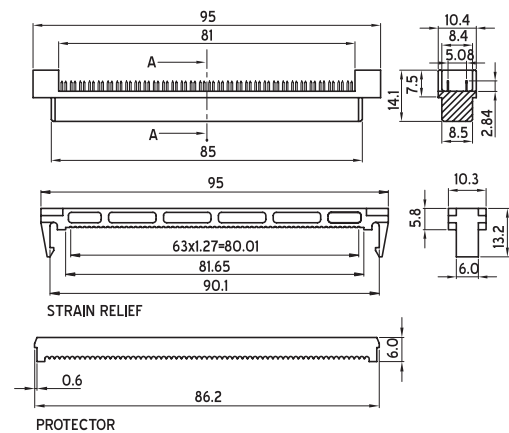
### 9 WAY COAX

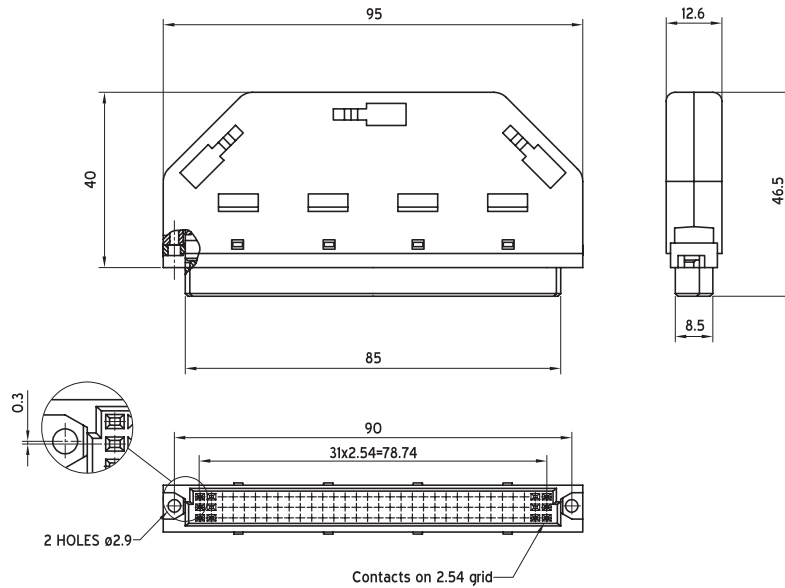


### 14 WAY RIBBON



### 64 WAY RIBBON



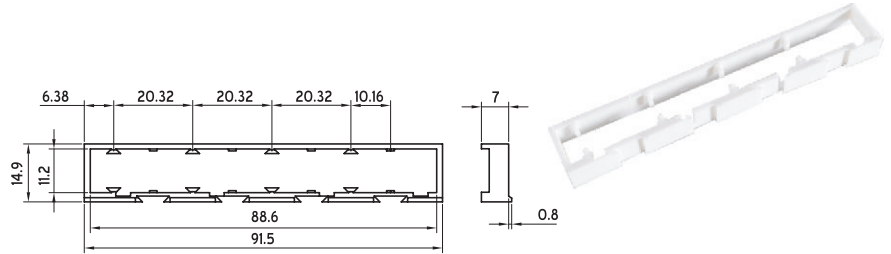
**96 WAY**

**Ordering code**

Series	Type	Moulding style	Contact loading pattern
E2X	F Female	210	DM
		090 - 3 row 9 way	AA - 3 row 96 way - (A+B+C) loaded
		210 - 3 row 21 way	AR - 3 row 64 way - (A+C) loaded
		450 - 3 row 45 way	DM - 3 row 21 way - (A+B+C) loaded
		960 - 3 row 96 way	DN - 3 row 14 way - (A+C) loaded
			DP - 3 row 9 way - (A+B+C) loaded
			DQ - 3 row 6 way (A+C) loaded
			DS - 3 row single coax contacts
			FD - 3 row 45 way - (A+B+C) loaded - 42 contacts
			FE - 3 row 45 way - (A+C) loaded - 28 contacts

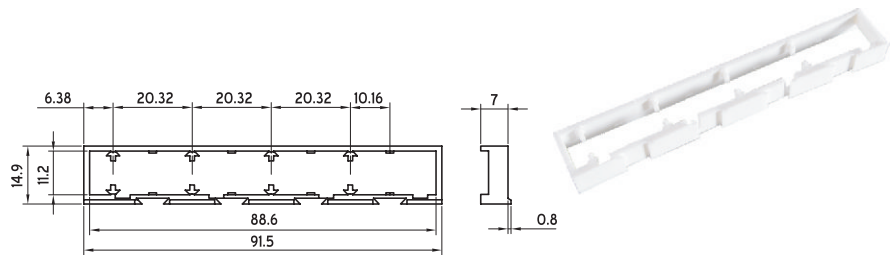
Termination	Cable style	Performance retention	Modification code
I2	CO	A	00
I1 - IDC 0.25 cable	RO - Ribbon cable	A - to BT 222	SPL - less coading tags
I2 - IDC 0.40 cable	CO - Discrete cable	C - to BT 222T	
I3 - Soldered coax	PO - Coax cable	D - Industrial	

**ACCESSORIES**
**Unpolarised latchframe**

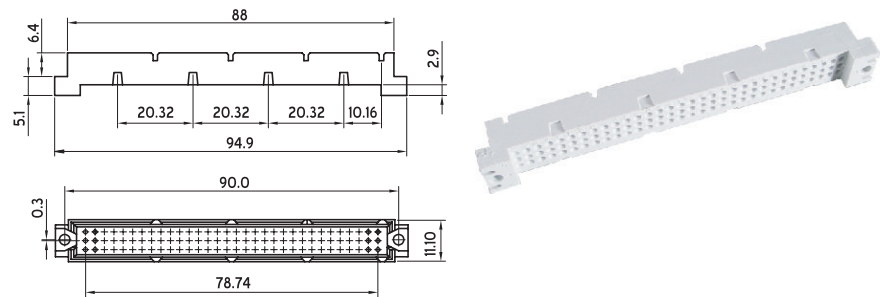
Ordering code      **068-7507-001**


**Polarised latchframe**

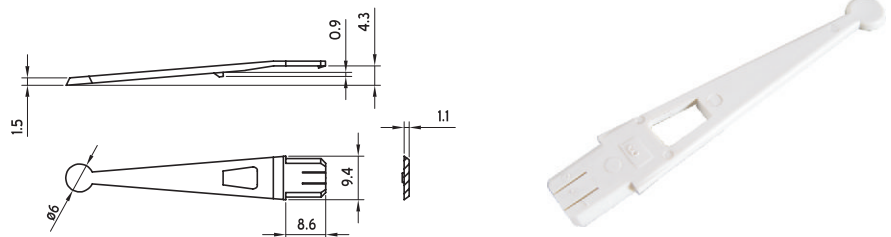
Ordering code      **068-7507-000**


**Triple row back shroud**

Ordering code      **391-7509-102**

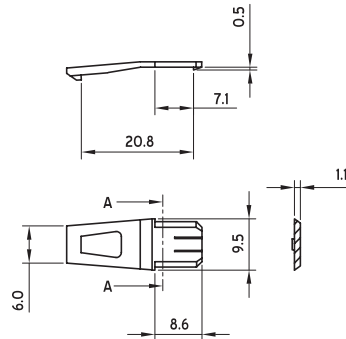

**Latch long**

Ordering code      **207-7508-000**

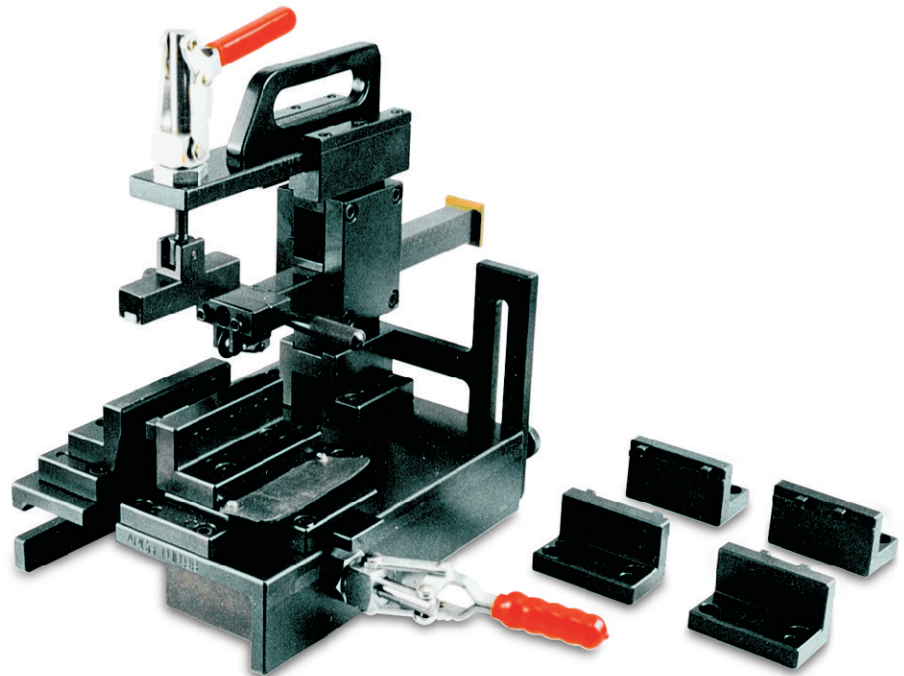


### Latch short

Ordering code      **207-7507-000**



### TERMINATION TOOLING



Ordering code

Bench press	<b>077350-1030</b>
Hand tool 14 way flat cable	<b>274-7540-001</b>
21 way jaw assembly	<b>077350-1032</b>
45/42 way jaw assembly	<b>077350-1033</b>
64/96 way jaw assembly	<b>077350-1034</b>