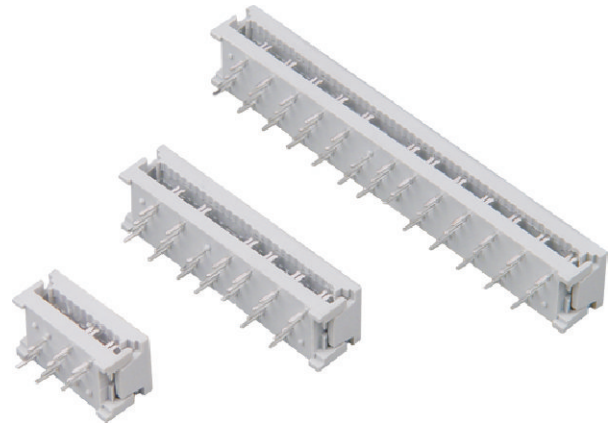


Characteristics :

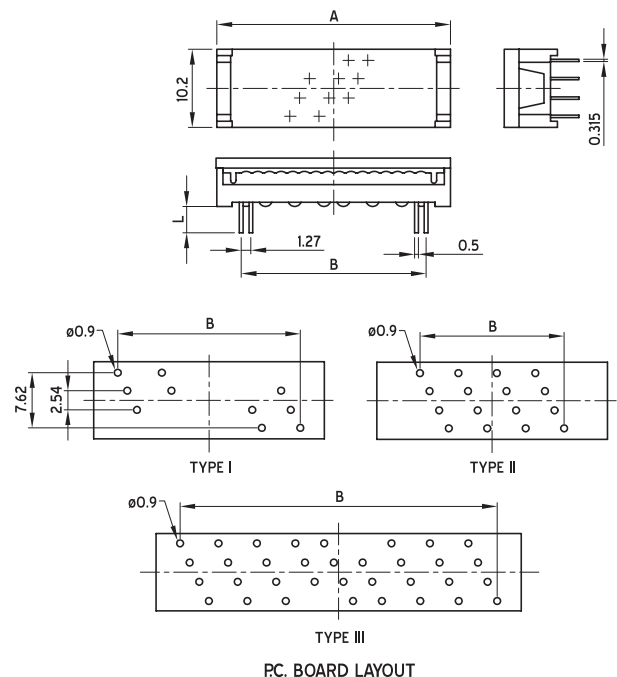
- ◆ Mass termination with flat cable
- ◆ Cable may be terminated before or after soldering connector to PCB
- ◆ Low profile design
- ◆ Moulded in flame retardant thermoplastic (UL94V-O)
- ◆ Gold / tin plated contacts
- ◆ Available in seven sizes ranging from 10 to 50 way
- ◆ Connectors available in two tail lengths to accommodate various PCB thicknesses



Ordering code	No. of contacts	Length		A	B	PCB layout
		'L' = 2.3 mm.	'L' = 3.7 mm.			
		PCB thickness (1.6 mm.)	PCB thickness (2.4 to 3.2 mm.)			
	10	883 10 1 ()	883 10 2 ()	17.78	10.43	Type I
	16	883 16 1 ()	883 16 2 ()	25.40	19.05	Type II
	20	883 20 1 ()	883 20 2 ()	30.48	24.13	Type II
	26	883 26 1 ()	883 26 2 ()	38.10	31.75	Type III
	34	883 34 1 ()	883 34 2 ()	48.26	41.91	Type III
	40	883 40 1 ()	883 40 2 ()	55.88	49.53	Type II
	50	883 50 1 ()	883 50 2 ()	68.58	62.23	Type III

Technical Data :

Temperature range	-55°C to +125°C
Current rating	1A
Contact resistance	20 milliohms max.
Insulation resistance	1000 Mohm min. at 500V DC
Dielectric strength	>500V AC, rms, 1 minute
Flat cable size	1.27 mm. spacing 28 AWG stranded or 30 AWG solid
Contact material	Copper alloy
Contact finish	Gold over nickel / tin plated
Insulator material	Flame retardant thermoplastic (UL 94V-O)



Add following at () in the ordering code above for contact plating required.

G = Gold. **T** = Tin.