



NEW

DIGITAL TEMPERATURE CONTROLLER

SERIES 'ETC 601'



Essen introduces the Digital Temperature Controller series "ETC 601" for use in process industry. The controller helps in high precision measurement and control of temperature. The controller accepts inputs from commonly available thermocouples and Resistance Temperature Detectors (RTDs). The control mode can be set to ON-OFF control or PID control (manual setting as well as automatic tuning). The micro-controller based instruments are constructed with high reliability solid state electronic components to ensure trouble free performance for several years. ETC 601 series are available in standard industrial bezel of 96 x 96mm, 72 x 72mm as well as a compact 48 x 48 mm size. Alarm can also be set for warning as the actual temperature differs from the set value.

Features:

- Input sensor field selectable from J, K, S, E thermocouples or PT100, Cu50 RTDs.
- Non-linear output of thermocouples is corrected in instrument to give low temperature measurement errors
- Alarms can be in instrument to give warning as actual value of temperature varies from desired (set) temperature
- Field selectable ON-OFF control or PID control (auto-tune as well as Manual), reverse (heating) or forward (cooling)
- In case of sensor break or incorrect wiring of thermocouple, instrument causes output to shut-down and gives error message
- Light yet robust construction using latest solid state electronic circuitry

Specifications:

Supply voltage	: 240 VAC +/- 10% in 96x86 and 72x72 mm sizes; Universal auxiliary input voltage 85- 265 V AC/DC in 48x48 mm bezel size
Mounting	: 2 polycarbonate flush mounted clamps for panel mounting.
Display	: 4 green high brightness seven segment LEDs for Process value (PV), 4 red high brightness seven segment LEDs for Set value (SV) .
Accuracy	: +/- 0.5% of Full Scale +/- 1digit.
Power	: 4 Watts maximum on auxiliary supply.
Panel cut-out	: 91.0 (W) x 91.0(H) mm(Tol.+/-1.0 – 0) mm. Depth behind panel 100 mm. 67.0 (W) x 67.0(H) mm(Tol.+/-1.0 – 0) mm. Depth behind panel 100 mm. 44.0 (W) x 44.0(H) mm(Tol.+/-1.0 – 0) mm. Depth behind panel 100 mm.
Sampling Period	: 3 samples/per second.
Control Mode	: ON –OFF control with settable reverse (heating)/forward (cooling). PID Control (automatic setting of parameters or manual setting) as well as settable reverse (heating)/forward (cooling).
Output Relay	: 1 NO relay, 8A @240 VAC / 28 VDC
Alarm Output	: 1 C/O Relay 2A @ 240 VAC/ 28VDC.
Insulation	: 1.5 KV @ 50Hz for 1 minute between auxiliary supply and input terminals.



NEW

DIGITAL TEMPERATURE CONTROLLER

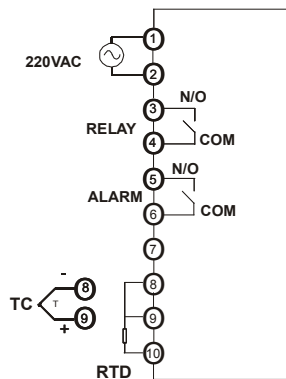
SERIES 'ETC 601'

Connections : Screw terminals with 2.5 mm² (14 AWG) maximum flexible strand cable connections.
 Protection class : IP 51 (front), IP 20 terminals.
 Enclosure Material: Flame retardant Engineering Thermoplastic UL-94V0 class.
 Ambient : 0 -60 °C, Relative humidity < 85% (non -condensing).
 Temperature
 Storage temperature : -10 to 70 °C.
 Warranty : 1 year from date of purchase.

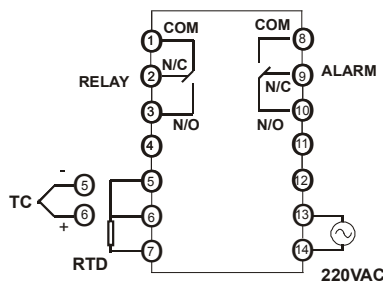
Sensor measurement range:

Input Sensor	Measuring Range (INPL to INPH)
J thermocouple	-50 ~ +1000 °C
K thermocouple	-50 ~ +1350 °C
S thermocouple	-50 ~ +1750 °C
E thermocouple	-50 ~ +800 °C
Cu 50 RTD	-50 ~ +150 °C
PT100 RTD	-50 ~ +850 °C

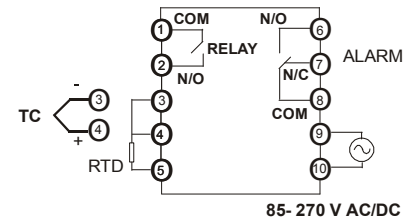
WIRING DIAGRAM



ETC601-A



ETC601-B



ETC601-C

CATALOG ORDERING CODE.

Series

ETC601 -

Size Code

A (96 x 96 mm Bezel)

B (72 x 72 mm Bezel)

C (48 x 48 mm Bezel)

ESSEN DEINKI

22, Industrial Area, Phase II, Chandigarh - 160 002 (INDIA)
 Tel: +91-172-4600600 (10 Lines), Fax: +91-172-4600666
 E-mail : info@essendeinki.com Website : www.essendeinki.com

ED/?????