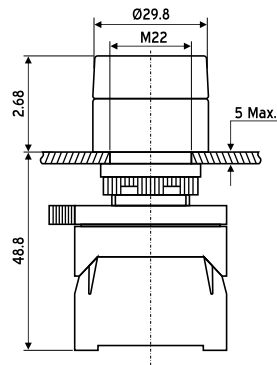


SELECTOR SWITCHES

(Non illuminated)

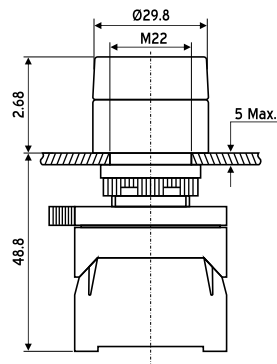
TWO POSITION
STAY PUT (standard knob)

Type	Description	Ordering code
A	Actuator	PB5-ED 2
B	Actuator & plastic bracket	PCB5-ED 2
C	Actuator, plastic bracket & contact block	PCB5-ED 2*

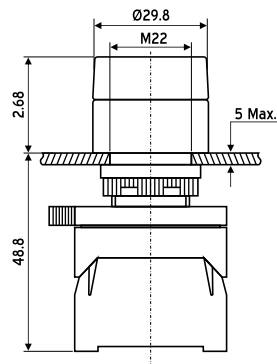

SPRING RETURN FROM RIGHT TO LEFT

(standard knob)

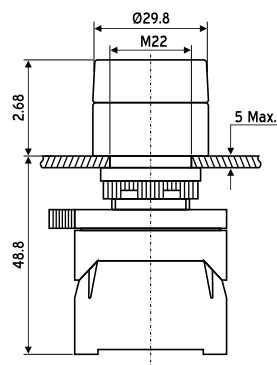
Type	Description	Ordering code
A	Actuator	PB5-ED R2
B	Actuator & plastic bracket	PCB5-ED R2
C	Actuator, plastic bracket & contact block	PCB5-ED R2*


THREE POSITION
STAY PUT CENTRE OFF (standard knob)

Type	Description	Ordering code
A	Actuator	PB5-ED 3
B	Actuator & plastic bracket	PCB5-ED 3
C	Actuator, plastic bracket & contact block	PCB5-ED 3*


SPRING RETURN FROM BOTH POSITION TO CENTRE (standard knob)

Type	Description	Ordering code
A	Actuator	PB5-ED R3
B	Actuator & plastic bracket	PCB5-ED R3
C	Actuator, plastic bracket & contact block	PCB5-ED R3*



Add following suffix at * in the ordering code of push button switches for contact blocks.

1 = NO contact, 2 = NC contact, 3 = NO+NO, 4 = NC+NC, 5 = NO+NC A = 2NO+NC B = NO+2NC C = 2NO+2NC